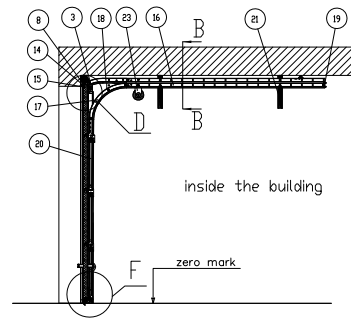
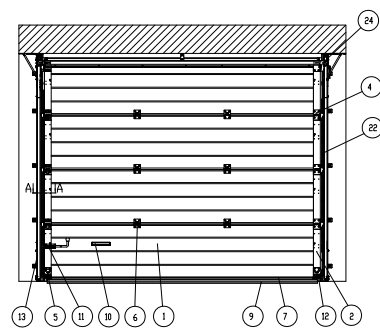


Garage doors Trend series with tension springs

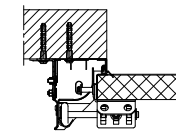
Description of door construction



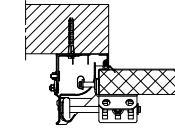
№	Title
1	Sandwich-panel
2	side cover
3	top roller bracket
4	side roller bracket
5	bottom roller bracket
6	intermediate hinge
7	Bottom profile
8	Top profile
9	bottom seal
10	handle
11	side bolt
12	end support
13	angle profile
14	top frame profile
15	seal
16	track profile
17	radius element
18	track set
19	C-profile
20	vertical rack
21	telescopic bracket
22	spring-balance system
23	pulley
24	bracket

A(5:1) Mounting types of vertical track profiles:

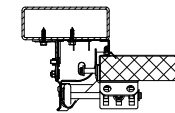
a) mounting to the wall,
bracket B-3500 is outside the
vertical rack



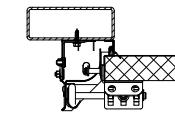
b) mounting to the wall,
bracket B-3500 is inside the
vertical rack



c) mounting to the tube,
bracket B-3500 is outside
the vertical rack

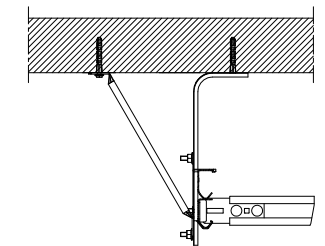


d) mounting to the tube,
bracket B-3500 is inside the
vertical rack

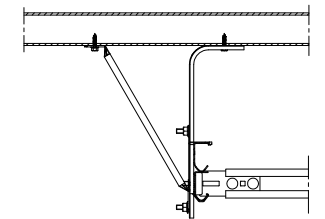


Mounting types of lifting bars of horizontal track profiles:

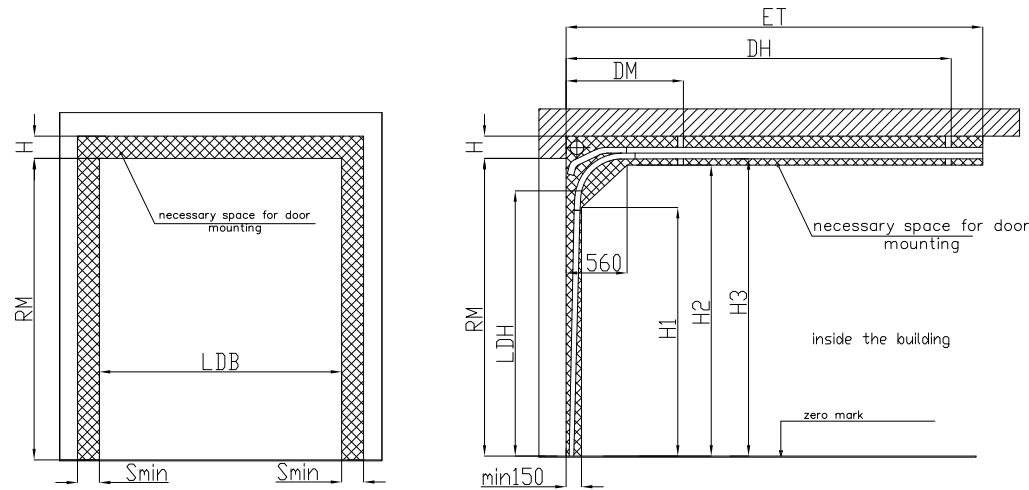
a) mounting to the ceiling



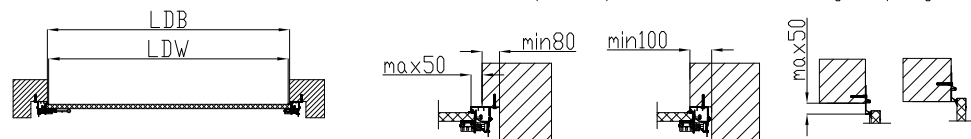
b) mounting to the tube



Mounting drawing of the door



Side racks and top frame profile can be moved in the gate opening

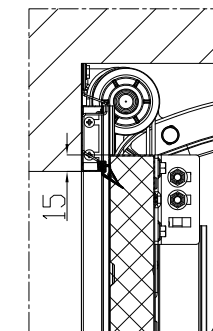


depth of entrance point ET and wall clamp DH in dependence on the height of the opening RM

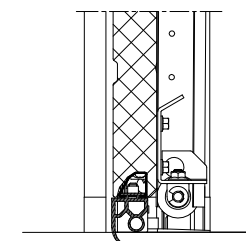
RM, mm	1750..1845	1850..1945	1950..2045	2050..2145	2150..2245	2250..2345	2350..2445	2450..2545	2550..2645	2650..2745	2750..2845	2850..2945	2950..3000
ET, mm	2240	2340	2440	2540	2640	2740	2840	2940	3040	3140	3240	3340	3440
DH, mm	1950	2050	2150	2250	2350	2450	2550	2650	2750	2850	2950	3050	3150

Parameter	Title	Calculating formula or value
H, mm	headroom height	min100 (manual operating)
		min125 (electrical drive)
		max900
LDH, mm	passage height in the light	RM-170 (manual opening of the door with Damper RS-3516)
		RM-100 (manual opening of the door with Holder LHT-3004)
		RM-100 (electrical drive with Damper RS-3516)
LDW*, mm	passage width in the light	LDB-30
DM, mm	wall clamp	950
H1, mm	limit dimension of door leaf motion zone	RM-440
H2, mm	limit dimension of door leaf motion zone	RM-50
H3, mm	Height up to the horizontal track	RM-15
Smin, mm	Minimal side space	100

D(10:1) place of door leaf adjoining to the headroom

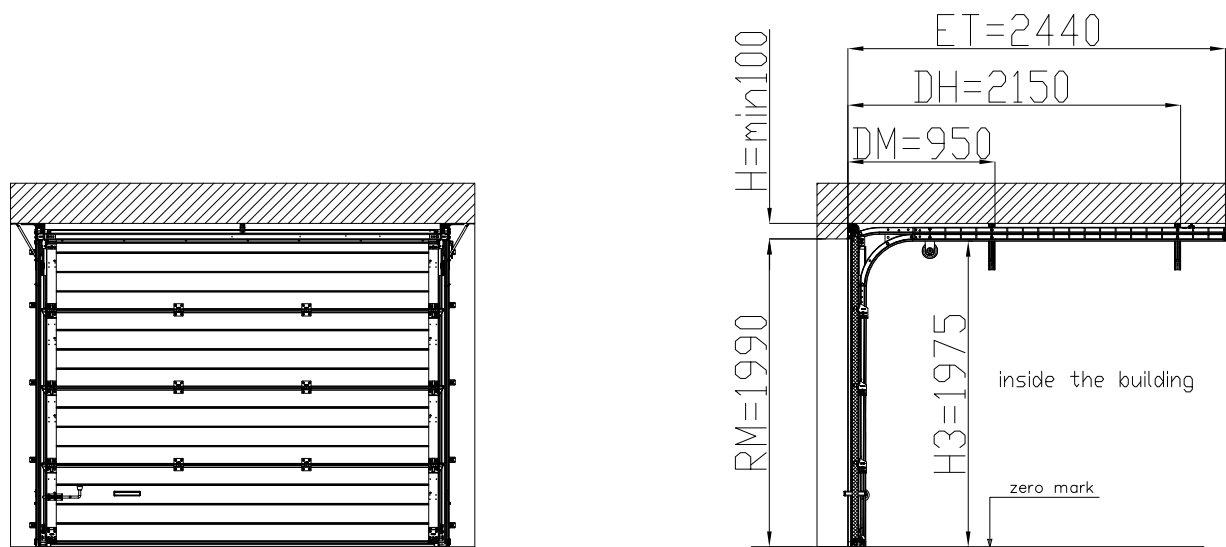


F(10:1)

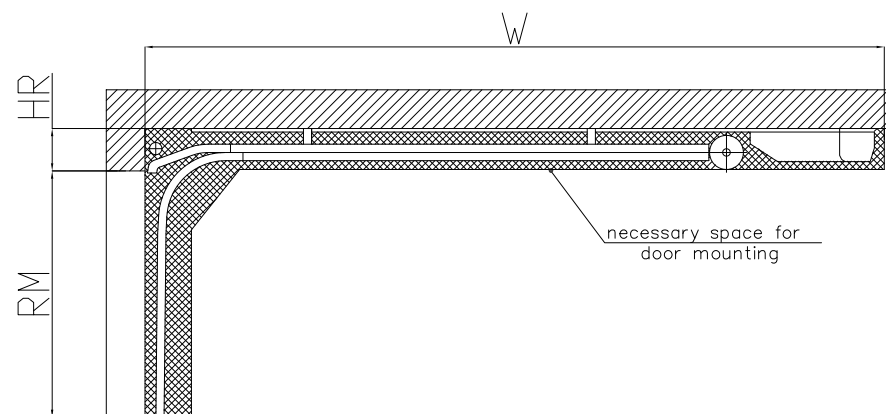


*The breadths of the passage in the light is specified according to the edges of side seals.

Height of door opening $RM=1990$ mm. Headroom height $H=\min 100$ mm



Additional parameters of the opening when using an electrical drive



Type of electrical drive	Opening height RM, mm	Type of rack	W, mm	Positioning height of the rack from the bottom of the headroom HR, mm
Comfort 50/60	до 2700	SZ-12SL (RU)	3735	125
Comfort 60L	до 3000	SZ-13SL	4300	
Comfort 260/270/280 (speed)	до 2300	SK/SZ-11SL	3290	
	до 2500	SK/SZ-12SL	3540	
Spido	до 2700	SZ-12SL (RU)	3740	140
	до 3000	SK/SZ-13SL	4300	
Shel	до 2400	BPA 0331A	3370	
	до 3000	BPA 0331A + SPA21	4370	
Spin	до 2400	-	-	210
	до 3000	+SH1	-	
ASG600 / 1000	до 2400	SNA30	3350	
	до 3000	SNA6	4135	
ASG600 / 1000	до 2600	ASGR3/ 3B	3700	210
ASG1000	до 3000	ASGR4/ 4B	4400	